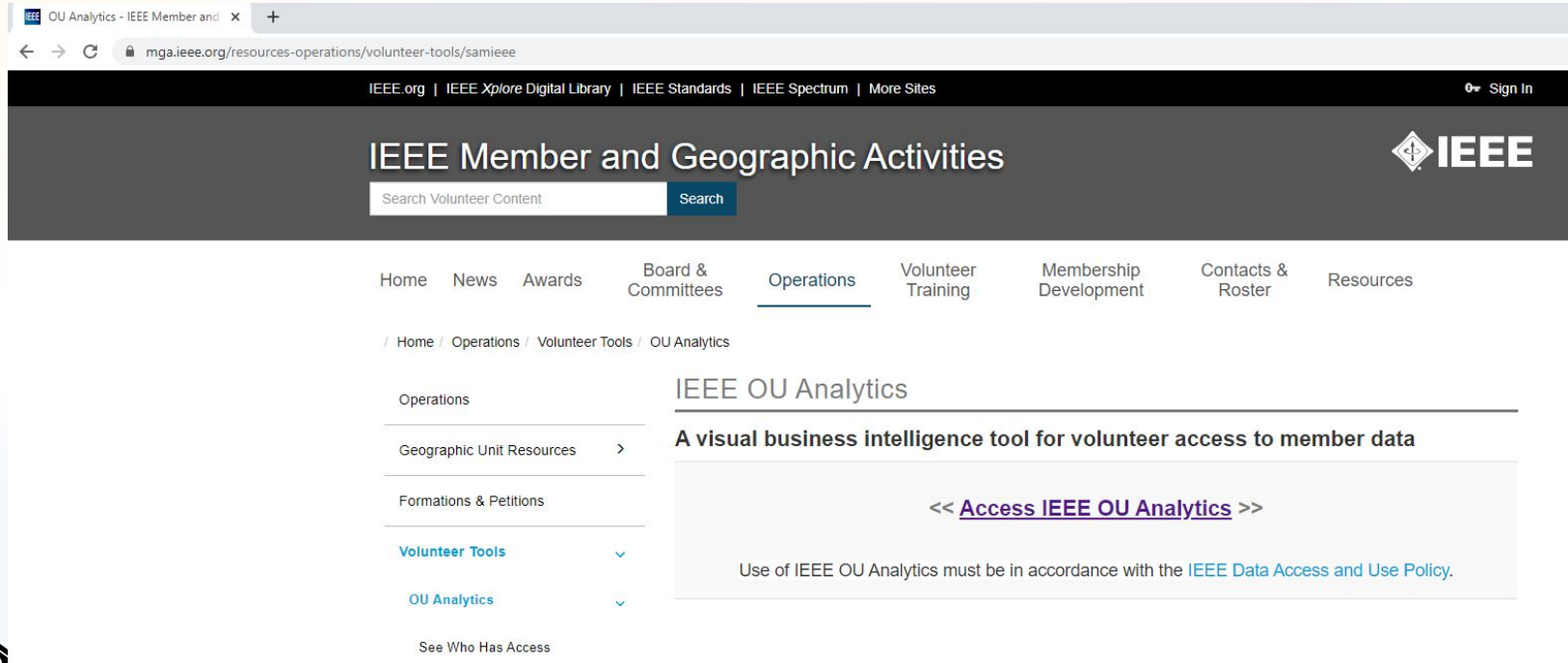


Access your Chapter's Roster

High quality reports enables us to better support you!



The screenshot shows a web browser window with the URL mga.ieee.org/resources-operations/volunteer-tools/samiee. The page title is "IEEE Member and Geographic Activities". The navigation menu includes: Home, News, Awards, Board & Committees, Operations (selected), Volunteer Training, Membership Development, Contacts & Roster, and Resources. The breadcrumb trail is: / Home / Operations / Volunteer Tools / OU Analytics. The main content area is titled "IEEE OU Analytics" and describes it as "A visual business intelligence tool for volunteer access to member data". A prominent link reads "<< [Access IEEE OU Analytics](#) >>". Below this, a note states: "Use of IEEE OU Analytics must be in accordance with the [IEEE Data Access and Use Policy](#)." The left sidebar contains a menu with "Volunteer Tools" expanded to show "OU Analytics" and "See Who Has Access".

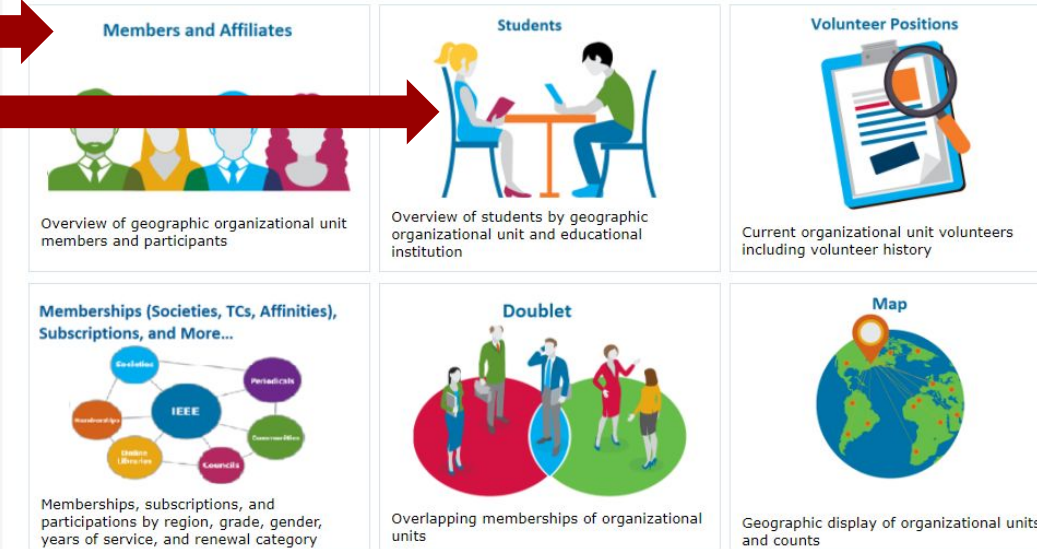


Access your Chapter's Roster

High quality reports enables us to better support you!

- Members & Affiliates
 - Alumni
 - Students
- Students
 - Students

IEEE OU Analytics



Access your Chapter's Roster

High quality reports enables us to better support you!

1. Select your chapter to exclude unrelated entries.

The screenshot shows the 'IEEE OU Analytics' dashboard. At the top, there are navigation tabs: 'Dashboard', 'Geographic Counts', 'Employer Information', and 'Detail'. A red arrow points to the 'Detail' tab. Below the tabs, the title 'IEEE OU Analytics' is displayed. Underneath, it says 'Members and Affiliates - Dashboard'. A descriptive paragraph follows: 'This dashboard provides interactive views for members, society affiliates, and participants by region, geographic council, section and subsection.' Below this are several filter options: 'Select OU of your Volunteer Role', 'Region', 'Grade', 'IEEE Status', and 'HKN Member'. A dropdown menu is open under 'Select OU of your Volunteer Role', showing a list of chapters with checkboxes. A red arrow points to this dropdown. Below the filters is a table with columns for 'Grade' and 'Total'. To the right of the table is a pie chart titled 'Count by Gender' showing the distribution of members by gender: Male (56.01%), Female (8.11%), and Unknown (35.87%).

Grade	Total
Associate Member	6
Fellow	1
Graduate Student Member	5
Life Fellow	4
Life Member	29
Life Senior	9
Member	483
Senior Member	7
Student Member	41
Other Grades	6
Affiliate	5
Individual	5
Total	596
1000 Island IFFF Grades Associate Member	11

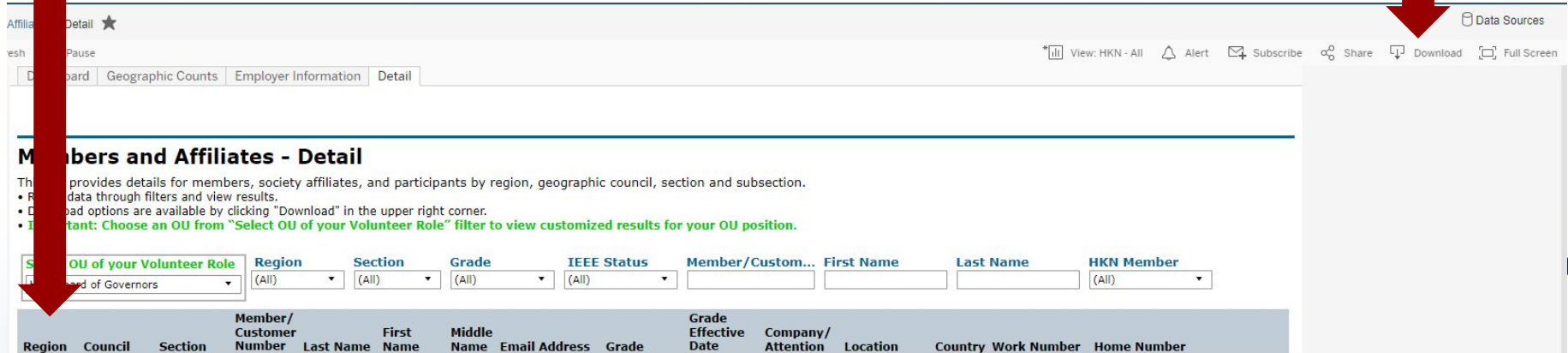
2. Then click the Detail tab.

Access your Chapter's Roster

High quality reports enables us to better support you!

1. Click the blue rectangle directly above the **Region** column label.

2. Click the **Download** button.



Affiliates Detail ★

Dashboard Geographic Counts Employer Information Detail

View: HKN - All Alert Subscribe Share Download Full Screen

Members and Affiliates - Detail

This page provides details for members, society affiliates, and participants by region, geographic council, section and subsection.

- Filter data through filters and view results.
- Download options are available by clicking "Download" in the upper right corner.
- Important: Choose an OU from "Select OU of your Volunteer Role" filter to view customized results for your OU position.

Select OU of your Volunteer Role Region Section Grade IEEE Status Member/Custom... First Name Last Name HKN Member

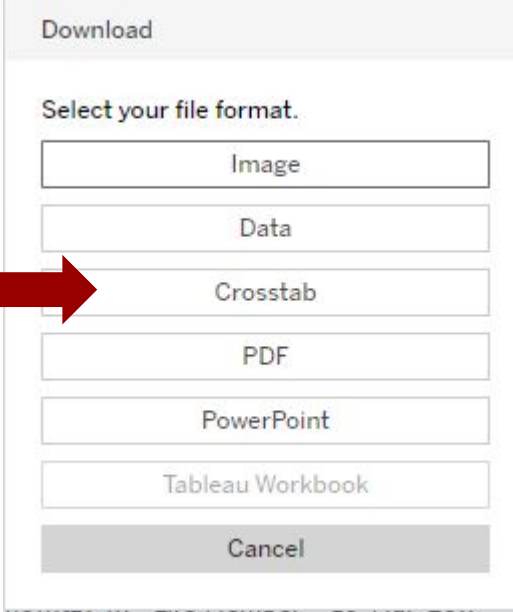
Region	Council	Section	Member/ Customer Number	Last Name	First Name	Middle Name	Email Address	Grade	Grade Effective Date	Company/ Attention	Location	Country	Work Number	Home Number
--------	---------	---------	-------------------------------	-----------	---------------	----------------	---------------	-------	----------------------------	-----------------------	----------	---------	-------------	-------------

Access your Chapter's Roster

High quality reports enables us to better support you!

Select *Crosstab* on from the Download menu.

Note: If *Crosstab* is not enabled, click above the **Region** column label and try again



A screenshot of a 'Download' menu. The menu is titled 'Download' and contains the instruction 'Select your file format.' Below this instruction are seven buttons: 'Image', 'Data', 'Crosstab', 'PDF', 'PowerPoint', 'Tableau Workbook', and 'Cancel'. A red arrow points to the 'Crosstab' button, which is highlighted with a light blue background.

